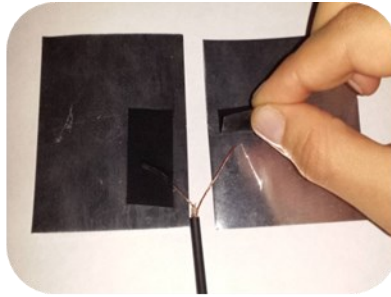


Instructions for making a switch



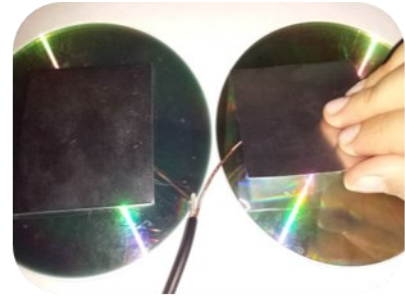
1. Prepare cable

Cut a mono cable in half, leaving a plug on one end and exposed wire on the other end. Use wire strippers to remove rubber coating and expose the two wires inside. Strip 3 inches off each exposed wire. Twist each set of wire to create two separate braids of wire.



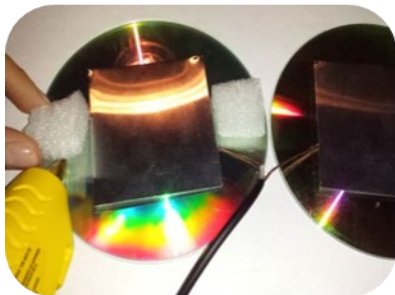
2. Attach wires to metal plates

Cut two metal plates (3 in. x 3 in.). Attach one exposed wire to each metal plate using electrical tape.



3. Glue metal plates to CDs

Attach the metal plates to the CDs using hot glue. The metal plates should be glued so that the wires are sandwiched between the CD and the metal plate.



4. Attach foam to a CD

Attach foam pieces to either side of the metal plate on one CD using hot glue.

Note: The thickness of the foam pieces determines how hard the switch must be pressed to be activated.



5. Glue CDs together

Apply hot glue to the tops of the foam pieces, then press the CDs together.

Note: Make sure the two metal plates are not touching when the CDs are attached.



6. Cover CDs and test

Cover the two CDs with any highly visible and/or textured material (i.e. soft foam, sandpaper, glitter paper, etc.) Plug the switch into an adapted device to test.

Prepared by Kevin Raley,

Vanderbilt University Student